

DESIGNER SHOWHOUSE



A Historic Showhouse in Boston

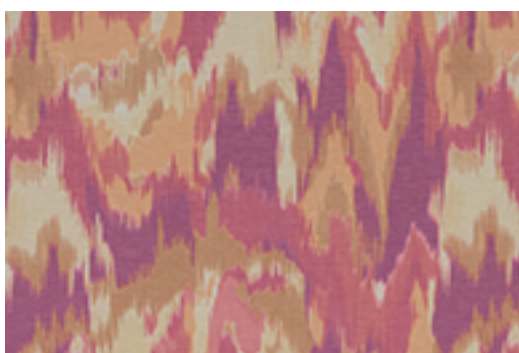
The forecast is sunny and bright for a mother-in-law suite designed by [Kelly Rogers](#) for the 2016 Decorators' Show House, hosted by the Junior League of Boston. "I wanted to create a personalized space that speaks to the fictional mother-in-law's vibrant, energetic personality, with a fresh, feminine and colorful scheme that incorporates a mix of familiar American antique forms, botanical motifs, and Asian design influences," Kelly said of her design inspiration.

Vibrant fabrics from Robert Allen and Beacon Hill were used to create a vivacious palette filled with magentas, yellows and aquas. The focal wall was covered in Olavanna Ikat in Magenta to form a lively backdrop for a headboard covered in Brushed Linen in Orchid and outlined in Jeweled Cord in Leaf. Moon Blossom draperies in Orchid are the perfect counterpoint to the sofa, upholstered in Forever Velvet in Robins Egg, and made cozy with throw pillows in Belle Bloom in Sunray and Water.

Photos by Eric Roth



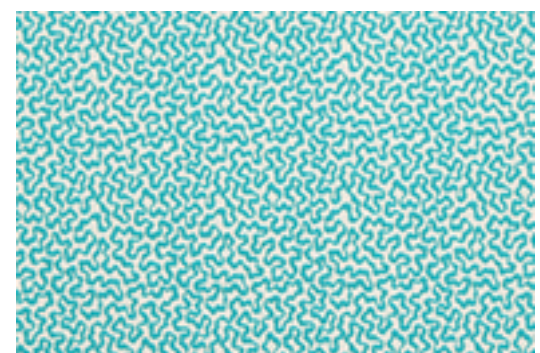
Shop the Fabrics



Olavanna Ikat | Magenta



Bedrock | Viridian



Spaced Out | Turquoise



Brushed Linen | Leaf



Brushed Linen | Orchid



Forever Velvet | Robins Egg



Moon Blossom | Orchid



Belle Bloom | Sunray



Belle Bloom | Water



Library Brush | Sunray



Library Brush | Water



Library Brush | Spring Grass



Jeweled Cord | Gold Leaf



Modern Bead | Turquoise



Scroll Braid | Natural

YOUR SEARCH ENDS HERE.® RobertAllenDesign.com



This email was sent by: **The Robert Allen Group**
2 Hampshire Street, Suite 300 Foxboro, MA, 02035, United States
800-333-3777

We respect your right to privacy - [View Our Policy](#) | [Manage Subscriptions](#) | [Update Profile](#)

View this email as a [web page](#).